

# F-550 SERIES PANEL MOUNT FLOWMETER

**PIPE SIZE:**  
1/4", 3/8", 1/2"  
3/4", 1"

## F-550 Features:

- Durable, highly polished, one piece meter body.
- #316 Stainless steel floats and float guides.
- Sturdy adapters with Viton® o-ring seals.
- Bulkhead nuts attach directly to inside panel.
- Separate mounting screws are not required.
- Adjustable Flow Control Valve (F-550A only) easy to disassemble. No special tool required, ALL FIELD REPLACEABLE.
- Acceptable in direct sunlight applications.

## F-550 Specifications:

Temperature ..... 200°F/93°C @ 0 pressure  
 Pressure ..... 250 psig/17.2 Bar @70°F/21°C  
 Full scale accuracy ..... ± 5%  
 Meter Body material ..... Machined acrylic  
 Adapter material ..... Polypropylene  
 O-rings ..... Viton  
 Float material ..... #316 SS  
 Approximate shipping wt. . 2 lbs. (.907 kg.)

See instruction manual at [www.blue-white.com](http://www.blue-white.com) for detailed installation and operating requirements.

## ORDERING INFORMATION

MODEL NUMBER	CALIBRATION GPM	CALIBRATION LPM	ADAPTER SIZE	FLOAT MATERIAL
F-55250L	0.025 to 0.250	0.1 to 1	1/4" M/NPT	#316 SS
F-55375L	0.1 to 1	0.4 to 4	3/8" M/NPT	#316 SS
F-55376L	0.2 to 2	0.75 to 7.5	3/8" M/NPT	#316 SS
F-55500L	0.5 to 5	2 to 20	1/2" M/NPT	#316 SS
F-55750L	1 to 10	4 to 40	3/4" M/NPT	#316 SS
F-55005L	1 to 5	3 to 18	1" M/NPT	Teflon
F-55010L	1 to 10	4 to 40	1" M/NPT	#316 SS
F-55015L	1 to 15	5 to 60	1" M/NPT	#316 SS
F-55200L	2 to 20	7.5 to 75	1" M/NPT	#316 SS

Note: To order with Flow Adjustment Valve add the letter "A" after the "L" in the model number  
 Model #F-55005L is not available with Adjustment Valve

## PANEL MOUNT UNITS FOR AIR

MODEL NUMBER	CALIBRATION SCFM	ADAPTER SIZE	FLOAT MATERIAL
F-55250G	0.1 to 1.2	1/4" M/NPT	#316 SS
F-55375G	0.5 to 4.5	3/8" M/NPT	#316 SS
F-55376G	1 to 7	3/8" M/NPT	#316 SS
F-55500G	2 to 20	1/2" M/NPT	#316 SS
F-55750G	4 to 45	3/4" M/NPT	#316 SS

Note: To order with Flow Adjustment Valve add the letter "A" after the "G" in the model number



F-550 Series

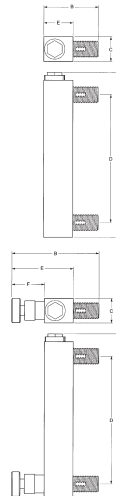


F-550A with Flow Adjustment Valve

## F-550 SERIES PARTS

Part Number	Description	List Price
76001-079*	Adapter F-55250	17.63
91001-141*	Adapter F-55375, F-55376	10.44
91001-142*	Adapter F-55500	10.44
91001-143*	Adapter F-55750	14.34
91001-144*	Adapter F-55200, F-55005, F-55010, F-55015	20.25
76001-153*	Adapter Adjustable valve 1/4" M/NPT	17.63
91001-173*	Adapter Adjustable valve 3/8" M/NPT	11.32
91001-174*	Adapter Adjustable valve 1/2" M/NPT	11.32
91001-175*	Adapter Adjustable valve 3/4" M/NPT	15.40
91001-176*	Adapter Adjustable valve 1" M/NPT	21.96
90003-034	O-Ring for adapter 1/4" (Adj. Model)	2.16
90003-081	O-ring for adapter 3/8", 1/2" (Adj. Model)	3.36
90003-110	O-ring for adapter 3/4" (Adj. Model)	5.96
90003-082	O-ring for adapter 1" (Adj. Model)	3.68
76001-080	Cap F-55250	8.39
91001-032	Cap F-55375, F-55376, F-55500	9.58
91001-033	Cap F-55750	11.17
91001-160	Cap for F-55200, F-55005, F-55010, F-55015	26.02
91001-171	Panel lock nut 3/4" M/NPT	2.96
91001-172	Panel lock nut 1" M/NPT	3.48
91001-153	Panel lock nut for 1/4" and 3/8" M/NPT	1.96
91001-154	Panel lock nut for 1/2" M/NPT	2.21
90003-072	O-ring for adapter 1/4" (Std. Models)	3.18
90003-034	O-ring for adapter 3/8", 1/2" (Std. Models)	2.16
90003-081	O-ring for adapter 3/4" (Std. Models)	3.36
90003-110	O-ring for adapter 1" (Std. Models)	5.96

\*This part requires an O-ring.



## Dimensions

### F-550 NON-ADJUSTABLE

Model Number	A	B	C	D	E	Mount Hole
F-55250L (1/4")	7 1/4"	2 1/2"	1 1/16"	5 5/8"	1 1/4"	9/16"
F-55375L (3/8")	8 3/8"	2 3/4"	1 11/32"	6 1/2"	1 1/2"	1 1/16"
F-55376L (3/8")	8 3/8"	2 3/4"	1 11/32"	6 1/2"	1 1/2"	1 1/16"
F-55500L (1/2")	8 3/8"	2 3/4"	1 11/32"	6 1/2"	1 1/2"	7/8"
F-55750L (3/4")	9"	3 3/4"	1 1/2"	6 1/2"	1 3/4"	1 1/16"
F-55200L (1")	10 5/8"	4"	1 3/4"	8"	2"	2 1/16"

### F-550 ADJUSTABLE

Model Number	A	B	C	D	E	F
F-55250LA (1/4")	7 1/4"	3 7/16"	1"	5 5/8"	2 7/16"	1 11/32"
F-55375LA (3/8")	8 3/8"	4 1/2"	1 11/32"	6 1/2"	3 1/4"	1 3/4"
F-55376LA (3/8")	8 3/8"	4 1/2"	1 11/32"	6 1/2"	3 1/4"	1 3/4"
F-55500LA (1/2")	8 3/8"	4 1/2"	1 11/32"	6 1/2"	3 1/4"	1 3/4"
F-55750LA (3/4")	9"	5 1/2"	1 1/2"	6 1/2"	3 1/4"	1 5/16"
F-55200LA (1")	10 5/8"	5 1/4"	1 3/4"	8"	3 1/2"	1 7/16"

Note: Mount Hole Dimensions are the same as the Model Non-Adjustable

## F-550 Series

